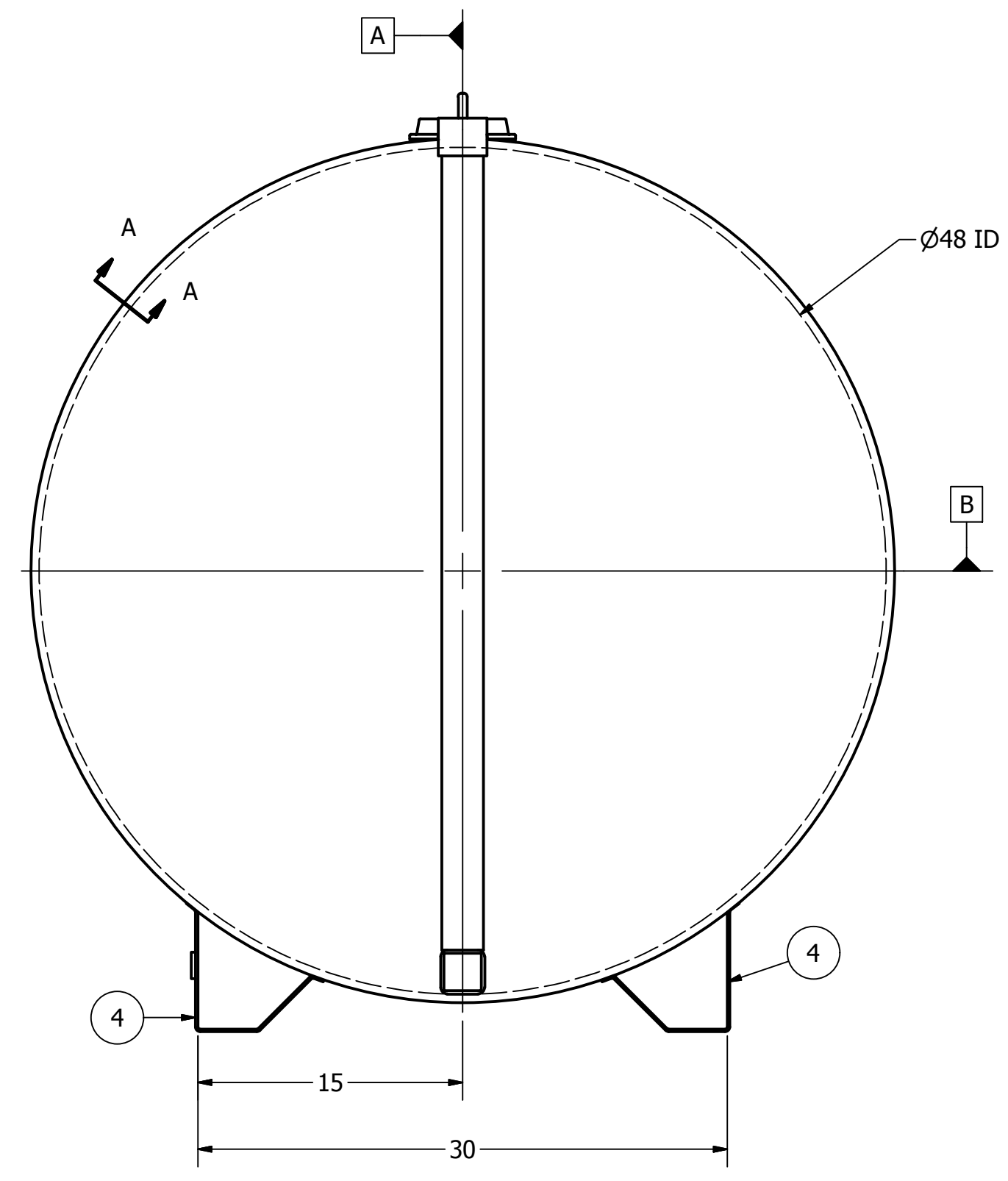
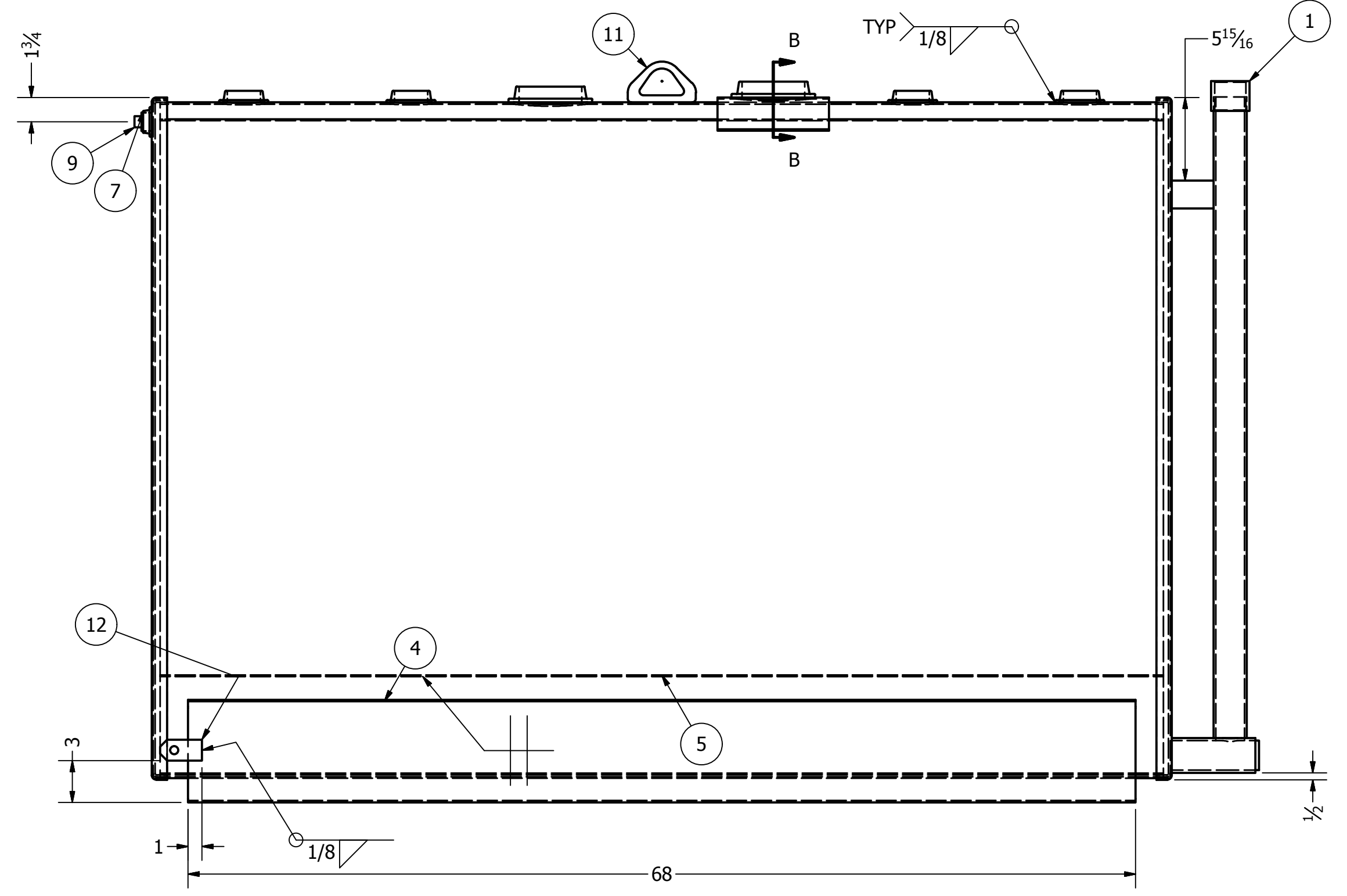
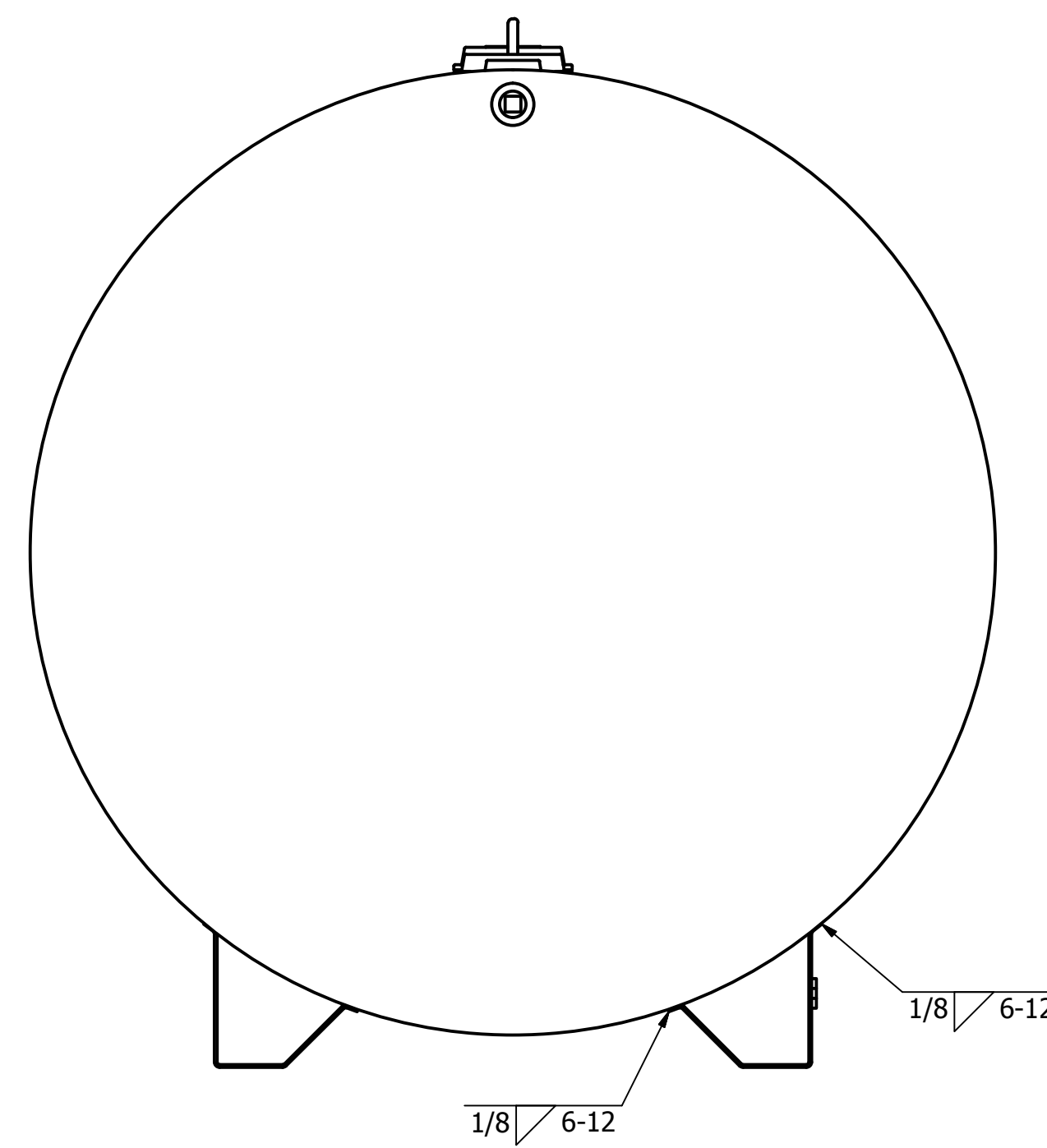
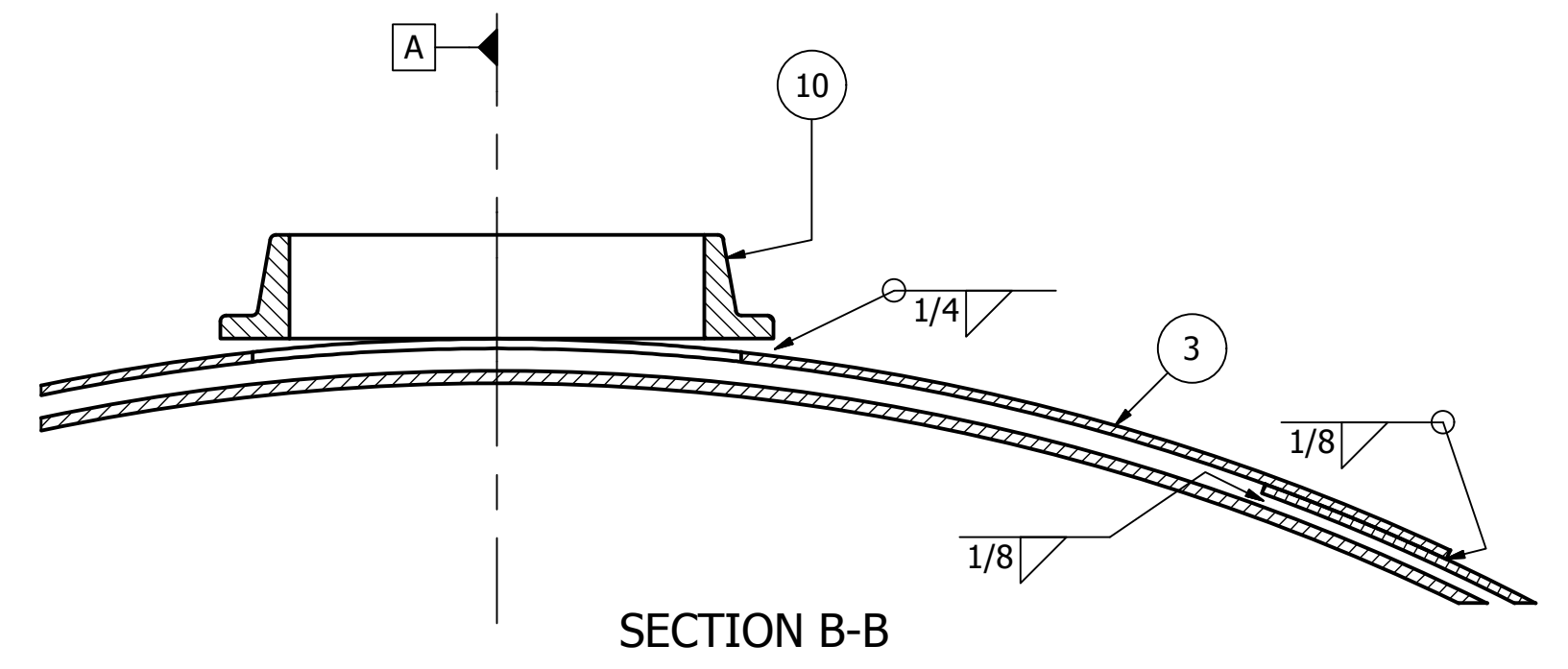


PARTS LIST					
ITEM	SL ITEM#	QTY	DESCRIPTION	MASS	NOTES
1	2000-0000	1	Monitor Pipe Assy,48 Tank	18.600 lbmass	
2	2000-0339	1	F-921 Label Set	0.685 lbmass	
3	3000-0036	1	E-Vent Plate,.105,8x21.688,48 Tank	5.078 lbmass	
4	3000-0041	2	Skid,SSP48,.135,68,30sp,STI	41.213 lbmass	
5	3000-0198	1	Shell,.135,48id,72,360d	416.851 lbmass	
6	3000-0429	1	Shell,Wrap,.105,48.539id,72,320d	291.242 lbmass	
7	TB002015	1	Weld Flange,Threaded,1, BLK	0.190 lbmass	
8	TB002022	4	Weld Flange,Threaded,2,BLK	0.534 lbmass	
9	TB002170	1	Pipe Plug,1,Square Head,BLK	0.378 lbmass	
10	TB002027	2	Weld Flange,Threaded,4,BLK	1.906 lbmass	
11	TB000905	1	Lift Lug,Small,6800#	0.806 lbmass	
12	TC000778	1	Grounding Lug, .250,1.5x3.0	0.284 lbmass	
13	TC000906	2	PL,10ga,50dia,48.27id,Flanged Head	75.193 lbmass	
14	TC000911	2	PL,12ga,49.75dia,48.75id,Flanged Head	59.886 lbmass	



DATE	REV	DESCRIPTION	ECN NO.	BY
2/16/2017	6	ADDED VENTING CAPACITY UPDDATED HEADS TO THE NEW FORMAT		DSC
5/2/2015	5	UPDATE SKID PROFILE		Tstoll
4/13/2015	4	ADDED 4" WF LOCATION DIMENSION		DSC
2/4/2015	3	CHANGED SHELL/HEAD JOINT		DSC
1/20/2015	2	CHANGE NIPPLE TO 4" WELD FLANGE		Tstoll
1/7/2015	1	ADD 1" WF AND PLUG		Tstoll
12/30/2014	0	RELEASE		Tstoll

NOTES:
 1) FINISH:
 EXTERIOR: PRIME GREY, WHITE PAINT W/FAST DRYING ENAMEL
 INTERIOR: NO COATING
 2) REQUIRED VENTING CAPACITY - 79,368.13(ft3/hr)
 3) BUILD & TESTING
 THIS TANK SHALL BE BUILT & TESTED IN ACCORDANCE WITH STI-F921 STANDARD FOR ABOVE GROUND TANKS
 4) REFERENCE LABEL SET DRAWING FOR POSITIONING OF LABELS

 UNLESS OTHERWISE SPECIFIED: UNITS = INCHES TOLERANCE: LINEAR ±1/8" ANGULAR ±1/2"	4401 West Main Fargo, ND 58103 Phone: 701-282-2345 Fax: 701-282-5516 TrueNorthSteel.com	 PART#: 1006-0001 DESCRIPTION: Tank,H,560,48x72,F921,Skid,320,0100 WEIGHT: 1090.059 lbmass SCALE DO NOT SCALE DRAWING
	DRAWN: Tstoll DATE: 12/30/2014 CHECKED: DATE:	