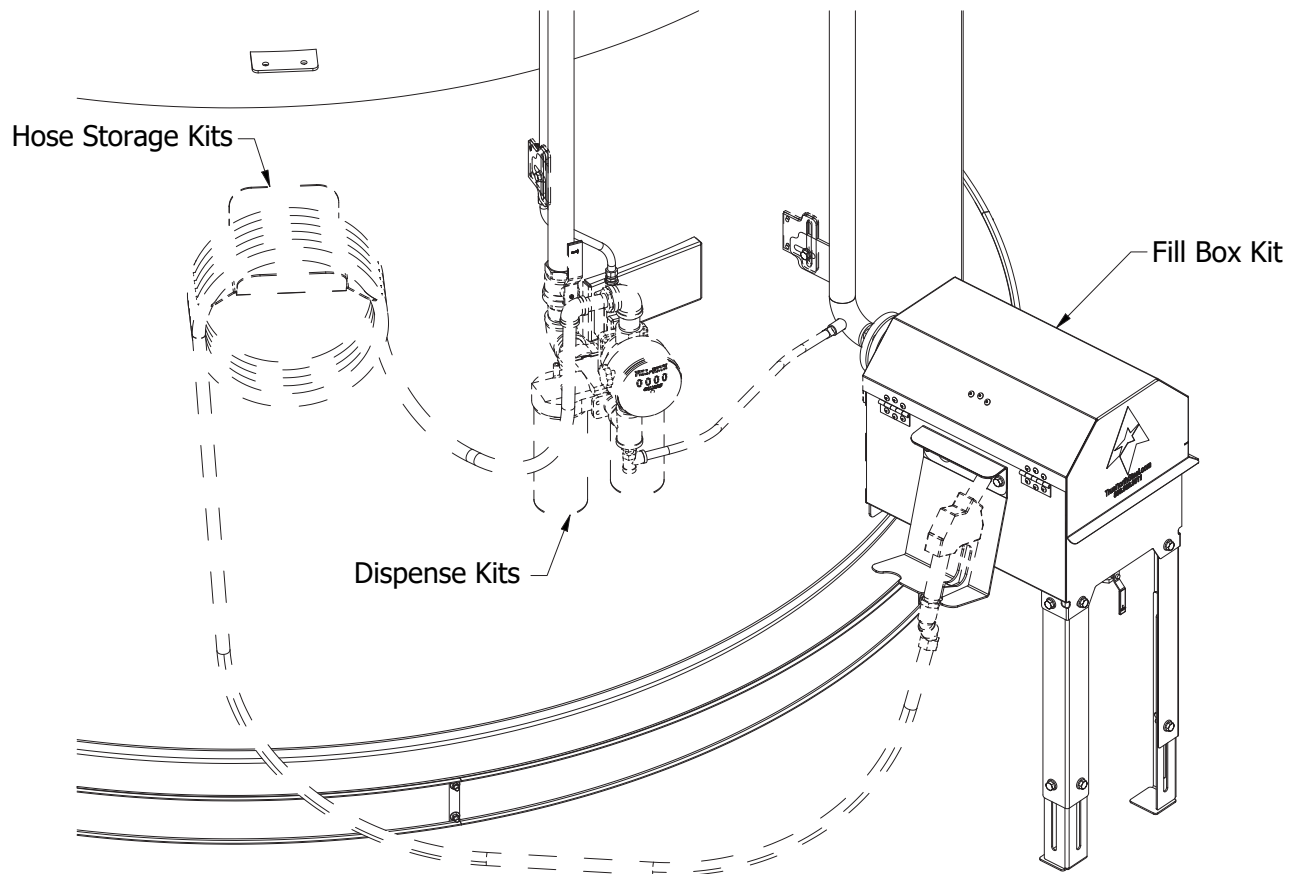


FILL BOX KIT FOR AG TANKS INSTALLATION GUIDE



DISPENSE KIT CONTENTS

1. Fill box assembly
2. Mounting flange assembly and hardware
3. Nozzle holder and hardware
4. Leg assemblies and hardware
5. Flange gasket and bolt kit
6. Swing check valve
7. Fill line ball valve
8. Quick coupler and cap
9. Drain ball valve
10. Pipe nipples

This instruction applies to the following kits available from TrueNorth Steel:

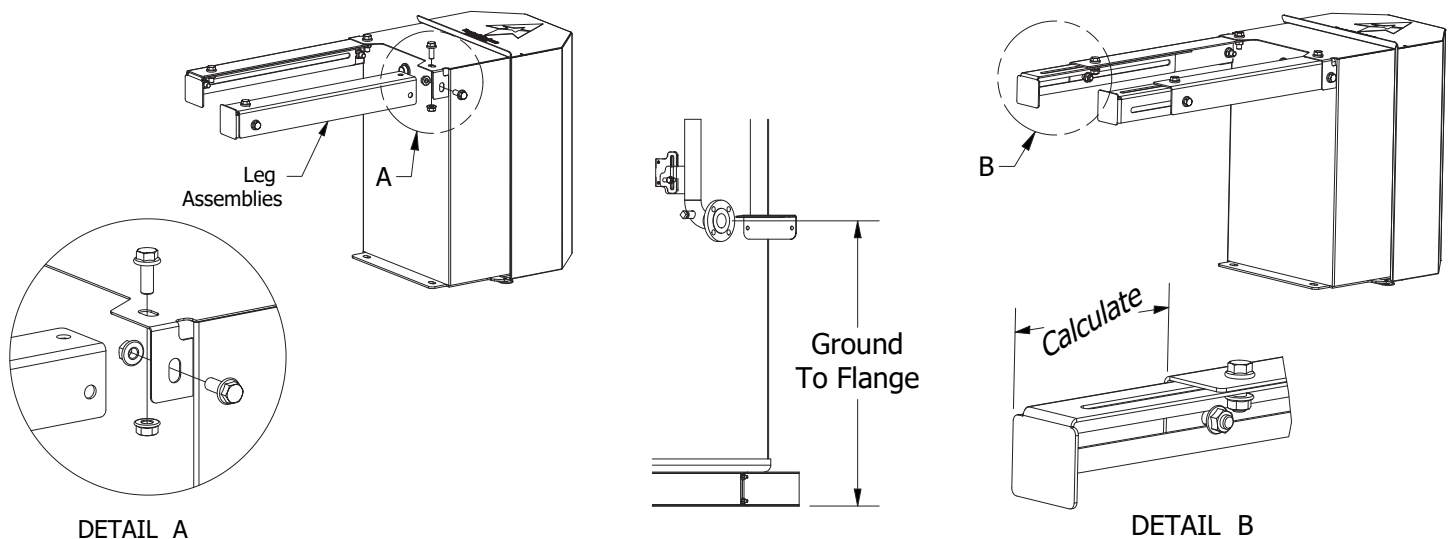
1505-0040 Fill kit with 2" pipe size

1505-0041 Fill kit with 3" pipe size

Document #4000-0011

INSTALLATION GUIDE

Note: 2 people are recommended for installation of fill box.

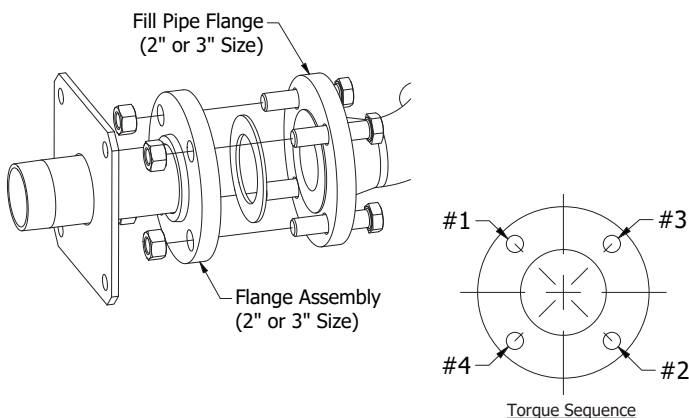


FILL BOX PRE-ASSEMBLY

1. Tip box on end with corner leg brackets up
2. Attach 2 leg assemblies with 2 bolts and nuts (leg assembly goes on the inside of the corner brackets)
3. Measure height to the center of fill pipe flange connection
4. Extend legs by calculated distance, loosening assembly bolts and sliding feet

To calculate appropriate amount of extension, measure height from the ground to the center of the fill pipe flange connection and subtract 42 1/2"

Example: 48 1/2" measured height - 42 1/2 = 6" of extension needed



ATTACHED FLANGE ASSEMBLY TO FILL PIPE FLANGE CONNECTION

1. Insert bolts provided in gasket kit into fill pipe flange
2. Place ring gasket inside the bolt pattern against the face of the tank flange
3. Attach flange assembly to tank flange using nuts provided in gasket kit
4. Torque nuts to 122 ft. lbs. in the following sequence:

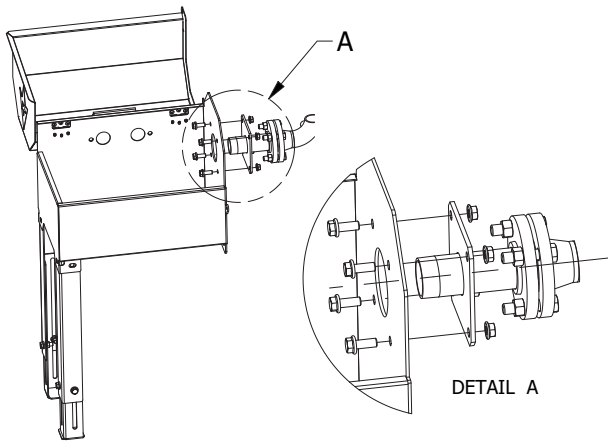
Step 1: 37 ft. lbs. in numerical sequence

Step 2: 86 ft. lbs. in numerical sequence

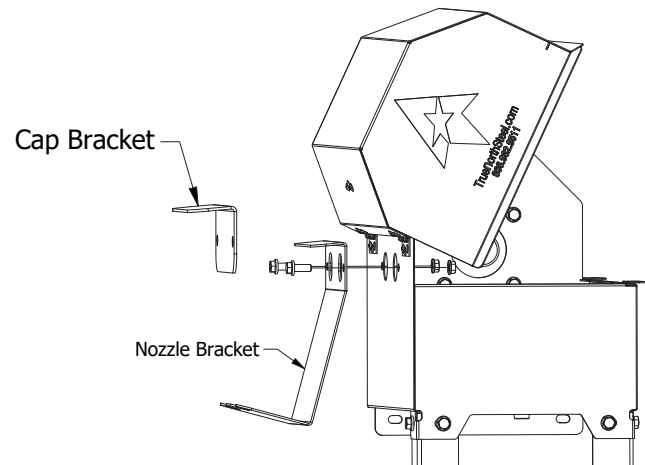
Step 3: 122 ft. lbs. in numerical sequence

Step 4: 122 ft. lbs. in final torque in a circular pass

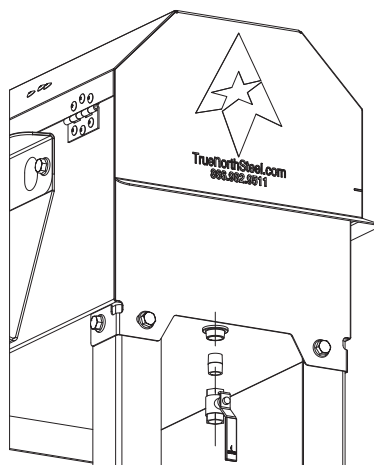
ATTACHING FILL BOX AND REMAINING COMPONENTS



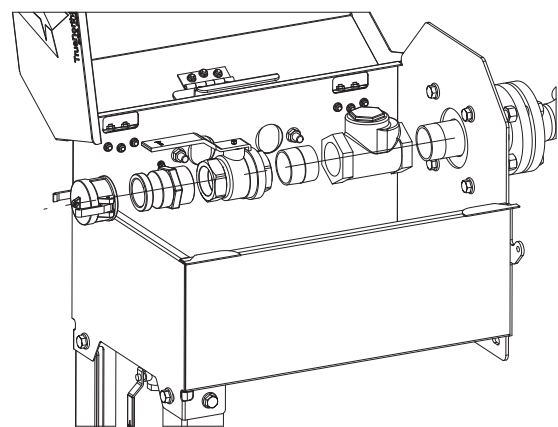
1. Stand and hold fill box upright on 2 legs
2. Position back of box around flange assembly pipe against plate, aligning bolt holes
3. Secure with four 3/4" bolts and nuts
4. If box is sagging, lift on end with legs, loosen leg assembly nuts, let feet drop to the ground and re-tighten



5. Install nozzle bracket or cap bracket (whichever is desired) on left side of fill box
6. With cover partially open, connect bracket to box with two 3/4" bolts and nuts through holes
7. Large holes align for inserting nozzle end into fill box when stowed

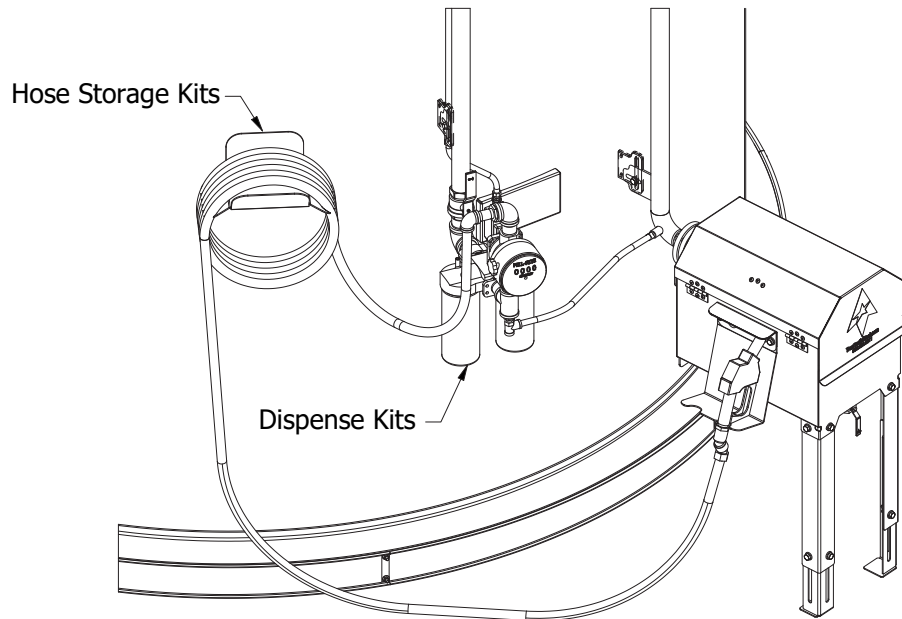


8. Install 1/2" ball valve into flange on bottom of fill box using provided pipe nipple
9. Connect hose for draining (not supplied in kit) if desired



10. Connect swing check valve to flange assembly pipe
11. Connect ball valve to valve using pipe nipple
12. Connect quick coupler to ball valve using pipe nipple
13. Insert dust cap onto quick coupler using quick coupler clamps

FINAL STEPS OF KIT INSTALLATION



1. Complete installation of additional accessory products per applicable installation instructions including
 - Dispense Kits
 - Hose Storage Kits

INSTALLATION OF PEDESTAL SUPPORT FOR REMOTELY LOCATED FILL BOX

1. 1505-0075 Pedestal kit ordered separately
2. Determine the approximate location and orientation of pedestal following pipe layout plan, or by connecting all piping from tank to where it will attach to fill box

Note: Do not anchor pedestal to concrete pad until piping is completely installed to ensure it is located where needed

3. Attach fill box to top of pedestal with bolts through each end
4. Fill box support leg assemblies are included and may be used for additional support and stability, as determined to be needed by installer
5. After all piping is satisfactorily in place, anchor pedestal to concrete pad using 4 anchors through base plate

