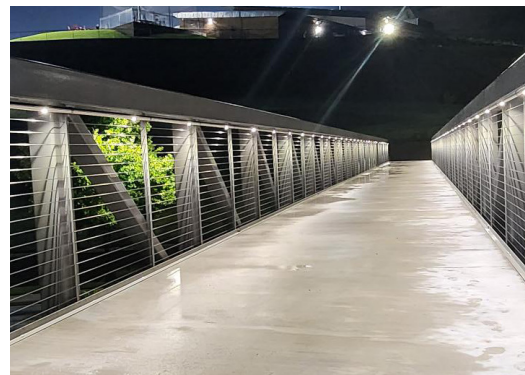
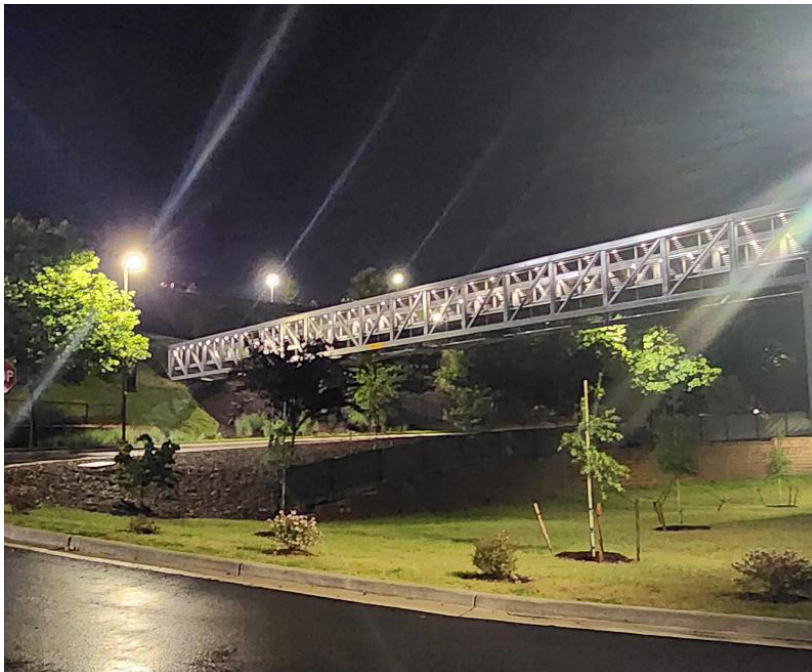




PEDESTRIAN BRIDGE

LIBERTY UNIVERSITY PEDESTRIAN BRIDGE



LOCATION	SIZE	COMPLETION DATE	SCOPE
Lynchburg, VA	29 Tons 10' X 145'	2022	Steel Railings

Liberty University needed a walkway from its indoor practice arena to the arena's parking lot. Located across a busy street, the parking lot was not easily accessible to athletes and staff. TrueNorth Steel provided a bridge that now gives pedestrians a safe path between the arena and the lot. One challenge this project faced was that it needed to meet a third-party inspector's requirements. Through diligence and close communication, the bridge passed inspection and now provides a permanent solution to the university's problem.