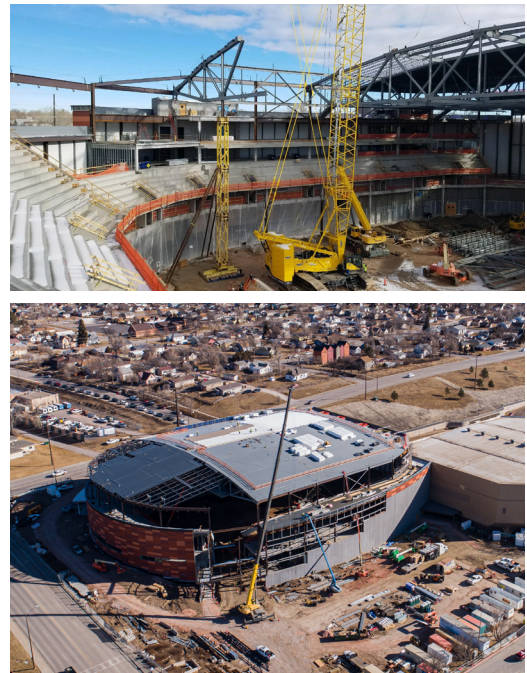




COMMERCIAL

THE MONUMENT - RAPID CITY CIVIC CENTER



LOCATION	SIZE	CONTRACT VALUE	SCOPE
Rapid City, SD	1,870 Tons	\$11,900,000	Structural Steel Miscellaneous Steel Joists Deck Steel Erection

The Monument will be a new multi-purpose, indoor arena located on the west side of the existing Rushmore Plaza Civic Center. The nearly 250,000 square-foot arenas will be home to sports and entertainment events. The facility will feature approximately 12,500 seats, a variety of experiential and premium seating options, additional social spaces within view of the action, and open and transparent concourses.

In Partnership with Mortenson.



TrueNorthSteel.com