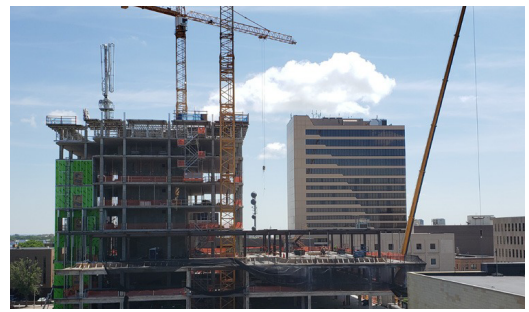




## COMMERCIAL BLOCK 9 PROJECT



LOCATION	SIZE	CONTRACT VALUE	SCOPE
Fargo, ND	670 Tons	\$3,200,000	Structural Steel Miscellaneous Steel Steel Decking Steel Erection

Block 9 is a mid-rise, mixed-use tower in the heart of downtown Fargo at the corner of Broadway and Second Avenue North. After 43 years as a surface parking lot, Block 9 has transformed the Fargo skyline. The project includes headquarters for hundreds of team members of R.D. Offutt Company, ground floor retail, a boutique hotel, restaurant, and residential condominiums.

Block 9 also includes a programmed public plaza, over a half acre in size, which is anticipated to become a gathering and celebration space for the region. Plans include seasonal amenities such as a skating rink, splash pad, vendor spaces, and a band shell for live performances.

In Partnership with BC Contracting and McGough.

