

FILL BOX KIT FOR SINGLE WALL TANK

WITH SUBMERSIBLE PUMP

INSTALLATION GUIDE

Install Hydrant and Valve:

Note: apply thread sealant to all fittings as they are attached.

The tank flange fitting is 3" size. If installing a 2" fill line, attach a 3"x2" pushing, then install the 2" fire valve.

If installing a 3", install the 3" fire valve directly into the tank flange fitting.

Attach a pipe nipple to the end of the fire valve, and attach elbow to pipe nipple, orientating the elbow upward, then attach a second pipe nipple to the elbow.

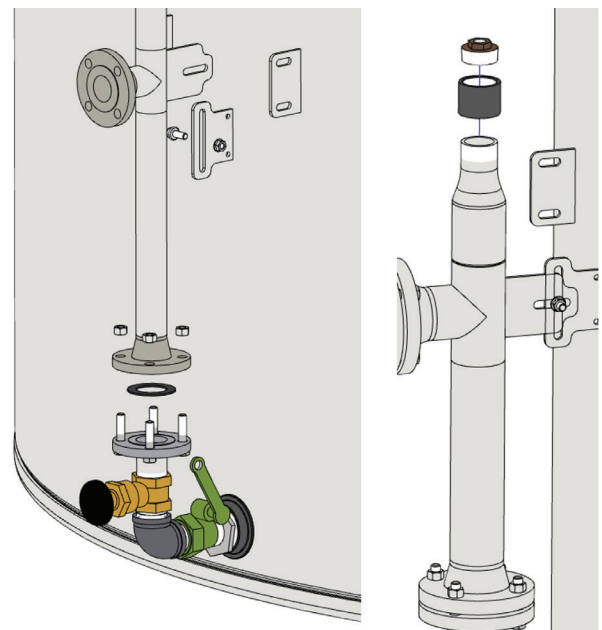
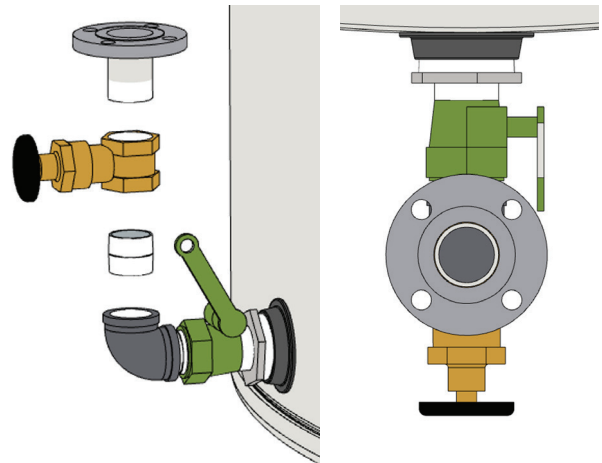
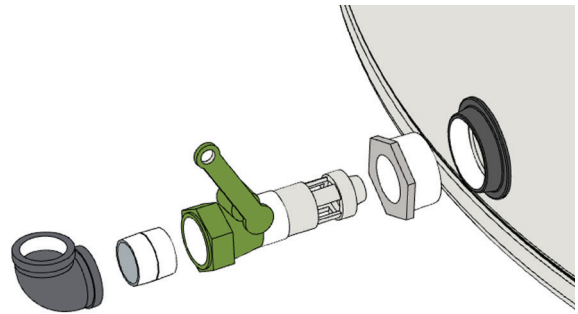
Install the gate valve to the pipe nipple and attach the threaded flange assembly to the gate valve. Center the hole pattern of the flange in line with the fire valve.

Install Flanged Pipe Assembly:

Connect the flanged pipe assembly using the bolt and ring gasket set provided.

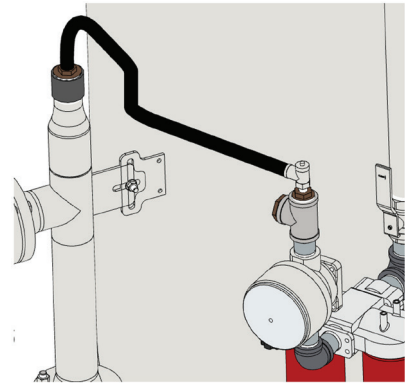
Attach the mounting tabs of the pipe assembly and the tank using one bolt & nut.

Attach a 2" coupler and a 2"x1/2" bushing to top end.



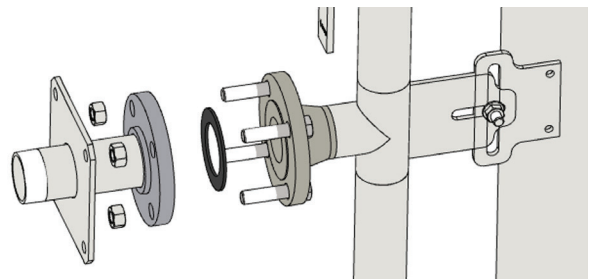
FILL BOX KIT FOR SINGLE WALL TANK WITH SUBMERSIBLE PUMP

Attach one end of fuel line to the bushing at the top end of the pipe assembly, and the other end to the pressure relief valve above the flow meter.

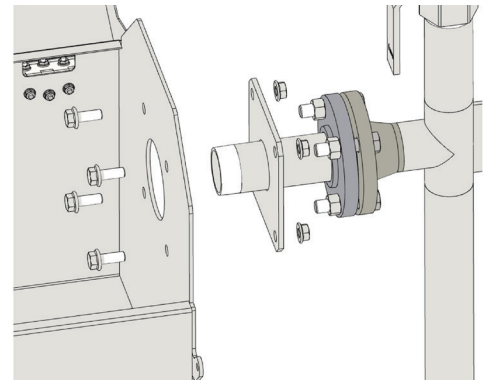


Install Flange and Fill Box:

Connect the fill box flange assembly to the tank fill pipe assembly, using the bolt and ring gasket kit provided.



Attach the fill box assembly to the mounting plate of the flange assembly, using 4 bolts and nuts.

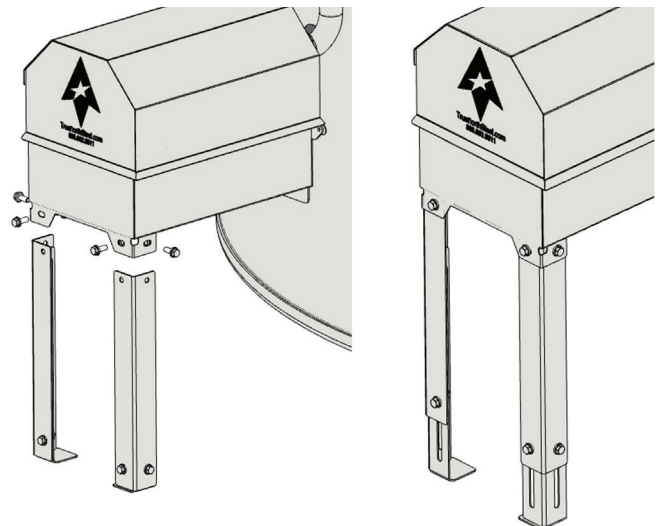


Install Leg Assemblies:

Attach 2 leg assemblies to the fill box assembly, using 2 bolts and nuts in each leg.

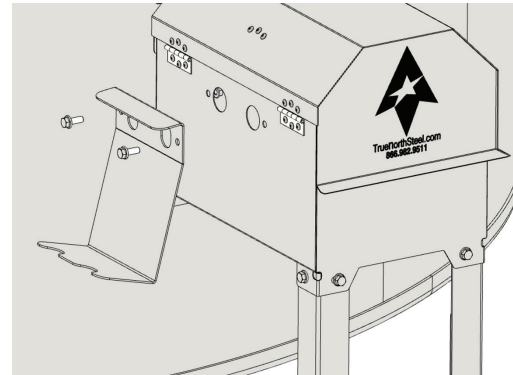
Loosen the bolts of the leg assemblies for adjustment, letting the foot drop to the ground.

Lift upward on the end of the fill box and with the foot extended to the ground, retighten the bolts.



FILL BOX KIT FOR SINGLE WALL TANK WITH SUBMERSIBLE PUMP

Attach the nozzle holder to the side of the fill box assembly, using 2 bolts and nuts.

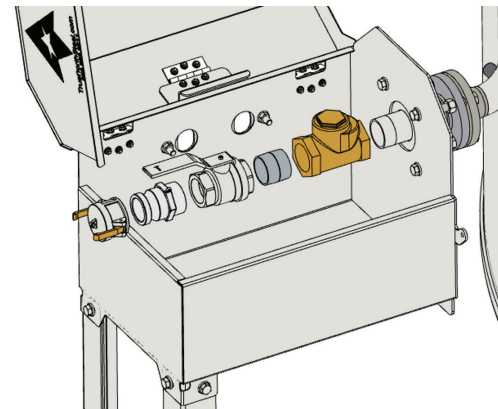


Install Internal Fittings:

Install the swing check valve to the flange assembly pipe inside the fill box, with the flow arrow pointing toward the flange and tank.

Attach a pipe nipple to the swing check valve and attach the ball valve to the pipe nipple.

Attach the quick coupler and dust cap to the ball valve.



Install Drain:

Connect 1/2" pipe nipple to flange on bottom of fill box and attach 1/2" ball valve to the pipe nipple.

The nozzle from the dispensing kit may be stowed in the nozzle bracket on the side of the fill box to complete the installation.

