

Richardton Bridge | Richardton, ND

21' X 28' Modular Steel Bridge

Owner

Stark County, ND

Contractor

Stark County Highway Department

Consulting Engineer

Stark County with input from KLJ

Application

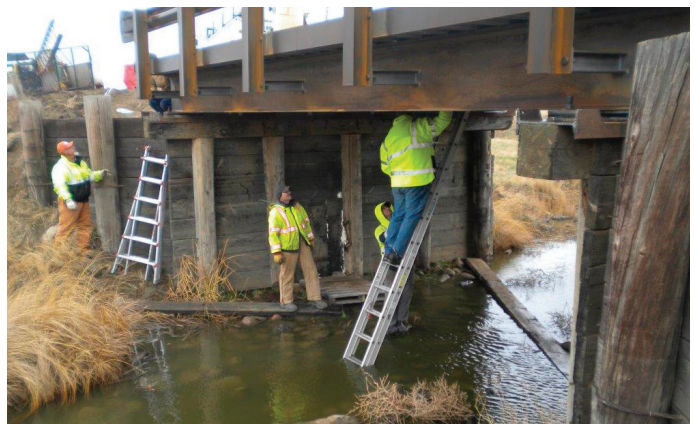
The modular bridge replaced a county bridge that had failed and caused delays and detours for residents and farmers.

Why this product versus others?

This bridge was initially proposed with an AASHTO HL-20-44 load rating and KLJ engineering requested the load rating be increased to an AASHTO HL-93. TrueNorth Steel's fast turnaround and low cost were keys in the decision to choose this bridge over other options. The modular bridge was installed on to the bridge pilings and completely assembled in less than three hours from arrival of the crane to lift the modules.

Project challenges

Before construction began a large John Deere grain hauler had to be removed. Its' weight caused the collapse of the old bridge. The Stark County crew designed and installed a custom steel cap for attachment to the wood pilings to accommodate the new bridge installation.



TrueNorth Steel®

TrueNorthSteel.com | info@TrueNorthSteel.com