

## Stillwater Mine 2000 Level Rail Drainage

| Nye, MT

### 12" Perforated Galvanized Drainline with 6" Risers

#### Owner

Stillwater Mine

#### Contractor

Stillwater Mine

#### Consulting Engineer

Stillwater Mine

#### Application

Perforated drainage along a new rail line

#### Why this product from TrueNorth Steel?

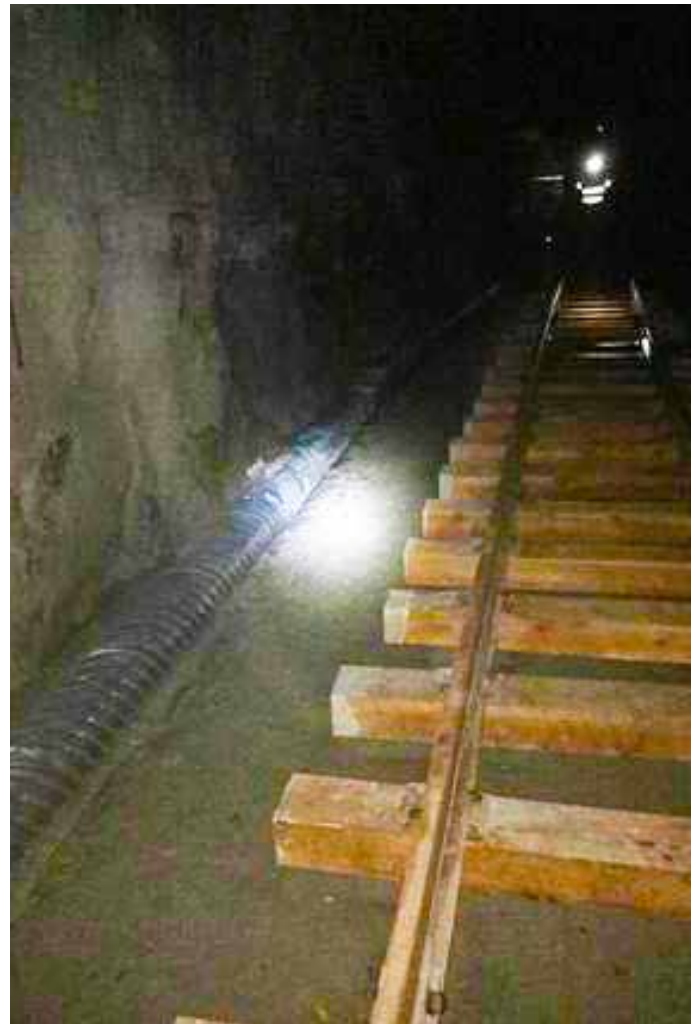
Cost effective and ease of installation

#### Project Challenges

The project is located underground in a mine.

#### Special/unique elements of the project

Transporting the perforated pipe to the jobsite was a challenge because the project is located in an underground mine. The pipe was made into 15' sections to facilitate transportation underground.



**TrueNorth Steel**<sup>®</sup>

TrueNorthSteel.com | info@TrueNorthSteel.com