



TrueNorth Steel®

Structural Tanks Corrugated Pipe Bridges Logistics

FORGING RELATIONSHIPS. DELIVERING QUALITY.

Since 1945.



TRUENORTH STEEL FARGO

4401 Main Avenue
Fargo, ND 58104
(701) 282-2345

TRUENORTH STEEL MANDAN

2424 Memorial Hwy
Mandan, ND 58554
(701) 663-0321

TRUENORTH STEEL RAPID CITY

3272 Lien Street
Rapid City, SD 57702
(605) 394-7200

TRUENORTH STEEL BILLINGS

1501 S 30th Street W
Billings, MT 59102
(406) 656-2253



info@TrueNorthSteel.com

TrueNorthSteel.com

702 13th Ave East
West Fargo, ND 58078

P 701 373 7781

F 701 373 8014

Thank you for your interest in TrueNorth Steel. We've been proudly fabricating steel products since 1945 and bring a wealth of knowledge and experience to help our clients find the best steel solution for their projects.

We are located across the Midwest, with more than 300,000 square feet of fabrication space. Our unparalleled work ethic coupled with our decades of experience in various markets make us the true solutions provider for your projects. Our steel can be found across the United States and Canada, and used in multiple applications including Commercial, Agriculture, Mining, Oil/Gas Refineries, and Bridges.

We offer Logistics services for all your projects, from permitting and pilot cars to packaging and route planning. Our Logistics team handles all aspects of shipping your delivery, regardless of the complexity. Plus, we manage our own fleet of trucks, putting us in control of your project delivery from start to finish.

Regardless of the scope of work or the scale of the project, fabricating and constructing any steel structure requires extensive knowledge and insight. At TrueNorth Steel, our dedicated team of Estimators, Project Managers, Detailers, and Production Staff work closely with our clients to provide support from concept to completion. We work closely with our clients combining their vision with our experience to ensure projects are designed, fabricated, and built to spec.

The bottom line: with a value system that encourages forward thinking, innovative ideas, flawless execution, a passion for honesty, unwavering ethics and real teamwork, we work hard to fulfill your every expectation.

Sincerely,

TrueNorth Steel Structural Team





COMMERCIAL

RAPID CITY REGIONAL HOSPITAL



LOCATION	SIZE	CONTRACT VALUE	SCOPE
Rapid City, SD	2,800 Tons	\$10,500,000	Pre-Construction Detailing Connection design Structural Fabrication Miscellaneous Metals Joist and Deck Steel Erection

Rapid City Regional Hospital's renovation and expansion project is the largest in its 45-year history. The \$200-million project involved renovating the hospital as well as building a new main entrance, hospital office building and parking structure, and expanding the emergency department. TrueNorth Steel assisted in a number of ways, including pre-construction and project management services, 3D steel detailing, building information modeling, structural and miscellaneous metals fabrication and steel erection.



COMMERCIAL

RIVERSIDE UNIVERSITY HEALTH SYSTEM MEDICAL OFFICE



LOCATION	SIZE	CONTRACT VALUE	SCOPE
Riverside, CA	1,400 Tons	\$5,000,000	Pre-Construction Detailing Structural and Misc Metals Fabrication Side Plate Steel Erection

The 200,000-square-foot, three-story Riverside University Health System Medical Office Building will open its doors to patients in early 2020. The new facility design includes multiple clinics, an ambulatory surgery center, rehabilitation center, pharmacy and imaging center as well as a new café and lobby. A new pedestrian bridge will connect the new building to the adjacent hospital. TrueNorth Steel provided pre-construction coordination, project management services, 3D steel detailing, building information modeling, structural metals fabrication and steel erection.

COMMERCIAL

MISSION VIEJO MEDICAL OFFICE BUILDING



LOCATION	SIZE	CONTRACT VALUE	SCOPE
Mission Viejo, CA	785 Tons	\$3,100,000	Structural Steel Misc. Steel SidePlate Steel Erection Detailing Project Management

The Mission Hospital Comprehensive Cancer Institute will span 104,000 square feet across four stories. The building, which includes extensive medical office space as well as a new parking garage, will reduce travel times for those in need of cancer treatment. TrueNorth Steel benefited the project in a number of ways, including pre-construction and project management services, 3D steel detailing, building information modeling coordination, structural and miscellaneous metals fabrication and steel erection.

INDUSTRIAL

SANFORD UNDERGROUND RESEARCH FACILITY



LOCATION	SIZE	CONTRACT VALUE	SCOPE
Lead, SD	3,050 Tons	\$11 Million	Structural Steel Brattice Panels Misc. Metals

S.U.R.F (Ross Shaft) is located in Lead, South Dakota, at the former Homestake Gold Mine which has now been converted into a dedicated science facility. The research facility has many experiments going on, one of them the “LUX Experiment” and the study of neutrino is located 4,850 feet underground. TrueNorth Steel has been working on S.U.R.F since June of 2013.

INDUSTRIAL

UREA FERTILIZER PLANT



LOCATION	SIZE	CONTRACT VALUE	SCOPE
Beulah, ND	4,000 Tons	\$14 Million	Structural Steel Misc. Steel Grating Bents Galleries Conveyors Connection Design

The Urea Plant is presently under construction, and is scheduled for completion in 2017. Construction includes a storage facility that can hold 53,000 tons of granular urea, as well as a new load-out facility that can load 110 rail-cars in a single shipment. Upon completion the plant will produce: urea, diesel exhaust and carbon dioxide. TrueNorth Steel fabricated 11 major structures for the process and handling facilities.

INDUSTRIAL

TACONITE PELLET PLANT



LOCATION	SIZE	CONTRACT VALUE	SCOPE
Nashwauk, MN	4,000 Tons	\$15.7 Million	Structural Steel Ductwork Bins Hoppers Chutes

Covering approximately 24,000 acres, the iron ore project is expected to be the only facility in the US to produce standard, fluxed and DR grade Pellets. TrueNorth Steel worked closely with the owners group and steel erector to expedite the fabrication and delivery of various complex components.



INDUSTRIAL

COAL CREEK STATION



LOCATION	SIZE	CONTRACT VALUE	SCOPE
Underwood, ND	12,000 + Tons	\$40 Million	Structural Steel Misc. Steel Bins Chutes Hoppers Ductwork EOR Asst. Connection Design

TrueNorth Steel works closely with the owners group continuously supporting their needs by providing innovative solutions. Operating on 3,370 acres, Coal Creek Station is the largest power plant in North Dakota, and is the third largest producer of coal ash in the US. Coal Creek Station was the testing site for “Dryfining™” which aims to improve fuel quality, decrease volatile gas emissions as well as reduce operating and maintenance expenses.

INDUSTRIAL

WATER TREATMENT PLANT EXPANSION



LOCATION	SIZE	CONTRACT VALUE	SCOPE
Fargo, ND	1,000 Tons	\$3.1 Million	Structural Steel Misc. Steel Grating Aluminum Rail Aluminum Decking Steel Erection

The City of Fargo is expanding the overall capacity of Fargo's Water Treatment Plant from 30 million gallons a day to 45 million gallons a day. The project, expected to last three years, will include technology to remove sulfate and bromide, as well as the construction of an independent treatment train to help with any future water quantity or quality problems that could develop. Due to the site having minimal storage and lay down area for materials, TrueNorth Steel had to coordinate the delivery schedule with the contractor and erector carefully. TrueNorth Steel was able to sequence the loads to allow the erector to immediately erect the steel that was shipped so that the site would not be congested with additional materials.

BRIDGE

CAPITOL INTERCHANGE BRIDGE



LOCATION	SIZE	CONTRACT VALUE	SCOPE
Helena, MT	2,150 Tons	\$4.1 Million	Plate Girders Diaphragms Connection Material

Capitol Interchange Bridge in Helena, MT is a two, two-lane highway bridge that spans over 700 feet over the MRL tracks and Capitol and Ceder interchanges.

BRIDGE

EGLISE BRIDGE - YELLOWSTONE CLUB



LOCATION	SIZE	CONTRACT VALUE	SCOPE
Big Sky, MT	540 Tons	\$2 Million	Structural Steel Misc. Metals Connection Material Connection Design Steel Erection

Eglise Bridge is comprised of two plate girder approach spans and two arch truss main spans. The total bridge length is 500 feet and 39 feet wide and includes a two-way drive lane as well as a pedestrian pathway. The bridge spans from the main lodge to the future Eglise mountain development.

BRIDGE

U.S. 83 MINOT BRIDGE



LOCATION	SIZE	CONTRACT VALUE	SCOPE
Minot, ND	1,350 Tons	\$3.1 Million	Plate Girders Diaphragms Connection Material

The U.S. 83 Minot Bridge Replacement contains over 100 girders and spans more than 816'. This five-lane highway is estimated to carry over 30,000 vehicles per day. The bridge spans over two different sets of railroad tracks and the mouse river connecting the core of downtown Minot. The project was started in March of 2017 and is expected to run through the summer of 2018.



BRYAN ZINGRAF

V.P. of Steel

4401 MAIN AVE FARGO, ND 58103
BRYAN.ZINGRAF@TRUENORTHSTEEL.COM
(701) 492-4467

BACKGROUND:

With over 20 years experience in the Manufacturing and Fabrication industry, Bryan spearheads business development for Structural Steel Products. As the Manager of Sales, Estimating, Detailing, and Project Management he has proven himself year after year as a strong leader for TrueNorth Steel.

INDUSTRY EXPERIENCE:

Bryan has experience in all facets of Structural Steel Manufacturing and Fabrication. From drafting, estimating, project management to operations. Working with Safety and Quality he has built relationships and gained general steel knowledge in the commercial and industrial aspects of structural steel throughout the United States and Canada.

MAJOR PROJECTS COMPLETED WITH TRUENORTH STEEL:

COAL CREEK STATION	Great River Energy	North Dakota	12,000 + Tons
SOUTHWEST POWER	City of Springfield	Missouri	850 Tons
SANFORD MEDICAL CENTER	Mortenson Construction	North Dakota	3,750 Tons
MULTIPLE POWER PLANTS	Kewit / TIC	United States	3,000 Tons

OTHER MAJOR PROJECTS:

1000 TARGET PLAZA	Ryan Construction	Minnesota	7,500 Tons
AMERICAN EXPRESS	OPUS Construction	Minnesota	7,100 Tons
900 TARGET NICOLLET	Ryan Construction	Minnesota	5,200 Tons
MILLENNIUM PARK	Walsh Construction	Chicago	2,500 Tons

EDUCATION:

North Dakota State University - 1993
Bachelor of Science, with Emphasis in Construction Management

REFERENCES:

Great River Energy	Monsanto	Northern Industrial Erectors
Paula Mastel	Sam Dalby	Derek Bostyancic
763-445-5417	314-694-4586	218-244-4772
PMastel@grenergy.com	Sam.S.Dalby@monsanto.com	dbostyancic@nie-mncom



DARYL BACHMEIER

Business Development

4401 MAIN AVE FARGO, ND 58103
DARYL.BACHMEIER@TRUENORTHSTEEL.COM
(701) 492-4434

BACKGROUND:

Having a track record of retaining client relationships, Daryl helps head our Business Development and estimating to ensure TrueNorth Steel's high standards.

INDUSTRY EXPERIENCE:

With over 29 years of experience Daryl has been the lead on numerous commercial and industrial projects ranging from \$500K to \$6M. He has done estimating and conceptual budgeting for commercial and industrial projects as well as commercial project management, VE participation, business development and sales.

MAJOR PROJECTS COMPLETED WITH TRUENORTH STEEL:

OTTERTAIL ETHANOL PLANT	Harris Mechanical	Minnesota	600 Tons
CANOLA CRUSH PLANT	Cargil	Canada	1300 Tons
UREA FERTILIZER PLANT	Dakota Gasification Co.	North Dakota	4000 Tons
CAMPBELL COUNTY HOSPITAL	Sampson Construction	Wyoming	1200 Tons
TACONITE PELLET PLANT	ESSAR Steel	Minnesota	4000 Tons
OILFIELD CAMPAIGN 2010-2013			

EDUCATION:

North Dakota State University - 1991
Bachelor of Applied Science, with Emphasis in Construction Technology

REFERENCES:

Sampson Construction	Missouri Basin	Flint Hills Resources
Boyd Batterman	Charlie O'Neil	Christian Barrett
402-434-5450	701-290-7240	770-714-3190
Boyd.Batterman@sampsonconstruction.com	Coneil@mobasin.com	Christian.Barrett@FHR.com



TOM PRILL

Business Development

1501 SOUTH 30TH STREET W. BILLINGS, MT 59102

TOM.PRILL@TRUENORTHSTEEL.COM

(406) 869-2614

BACKGROUND:

Having a track record of retaining client relationships, Tom helps head our Business Development, Estimating, and Project Management to ensure TrueNorth Steel's high standards.

INDUSTRY EXPERIENCE:

With over 18 years of experience in all areas of construction, Tom has spent the last 14 years specifically focused on Business Development associated with large scale Structural Steel Projects, by participating in project budget development, value engineering, and complete project execution.

MAJOR PROJECTS COMPLETED WITH TRUENORTH STEEL:

NORTHWESTERN ENERGY	Dick Anderson Construction	Montana	700 Tons
PROVIDENCE BREEZE MOB	Snyder Langston	California	500 Tons
WASHINGTON STATE UNIVERSITY	Clark Construction	Washington	800 Tons
CHS LAUREL REFINERY	Cenex Harvest States	Montana	5000 Tons
CAPITOL INTERCHANGE BRIDGE	Sletten Construction	Montana	2000 Tons

OTHER MAJOR PROJECTS:

INNOVATION VILLAGE	Millie & Severson	California	890 Tons
CERRITOS TOWN CENTER	Millie & Severson	California	675 Tons

EDUCATION:

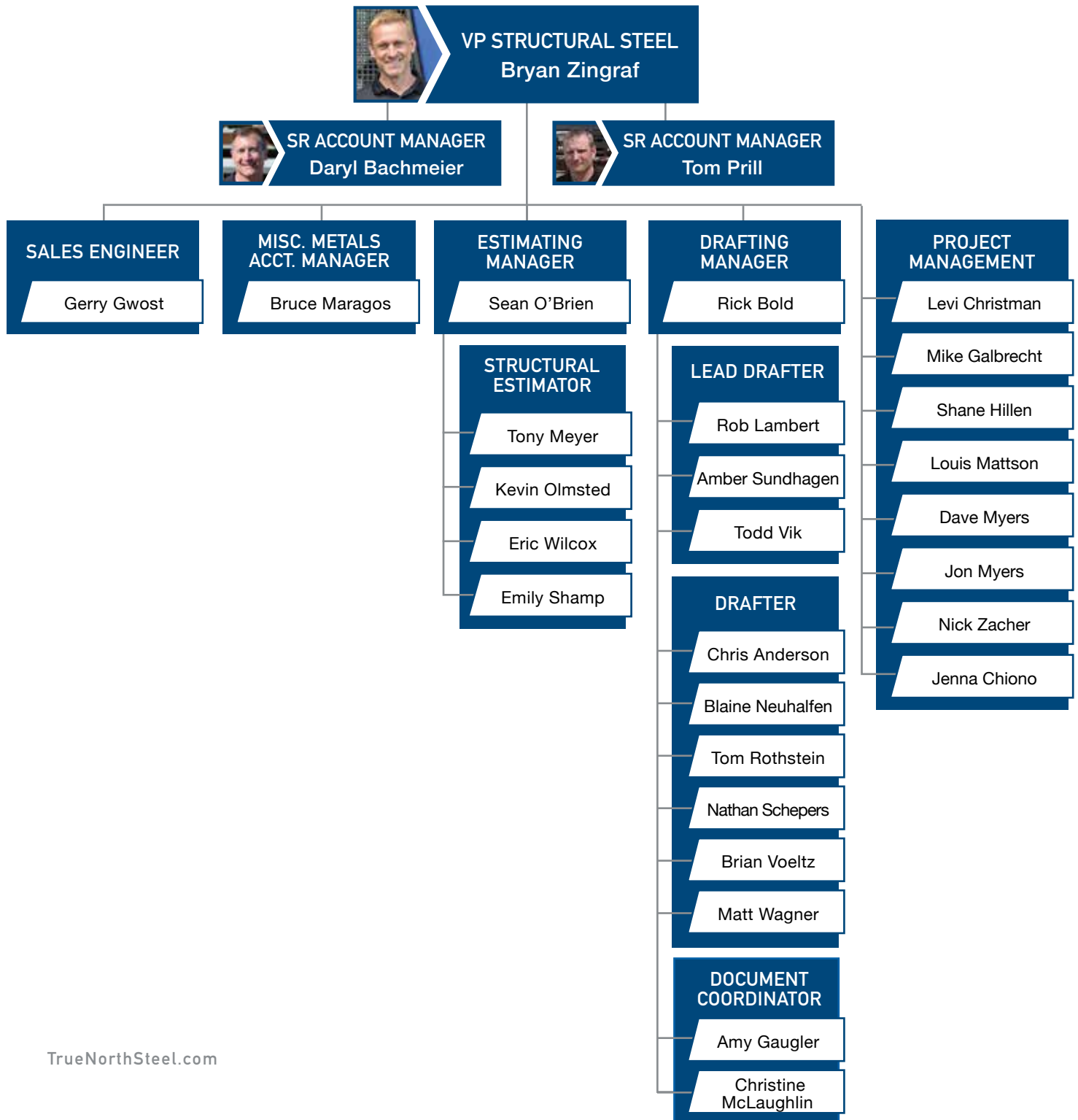
Montana State University - 2001

Bachelor of Applied Science, with Emphasis in Engineering Technology

REFERENCES:

LoenBro	Dick Anderson Construction	Jackson Contractor Group
Blake Hawley	Marty Schuma	Doug Jackson
406-453-1542	406-443-3225	406-542-9150
bhawley@loenbro.com	mschuma@daconstruction.com	E.dougj@jacksoncontractorgroup.com

ORGANIZATIONAL STRUCTURE





VISION

BELIEVE IT SEE IT GO GET IT!

MISSION

The mission of the **Structural Steel Team** is to enthusiastically identify profitable structural and plate work opportunities in the commercial and industrial markets. We will strategically align ourselves with clients who recognize the value of a team approach and focus on an outcome that proves growth and success. We will consistently provide innovative and responsible solutions that add value to TrueNorth Steel and our clients.

We will always challenge ourselves and our clients to best our best!

VALUES

- Reliable
- Experience
- Sustainability
- Economical Solutions
- Diversity/Flexible
- Positive
- Competitive
- Perseverance
- Communication
- Supportive
- Sense Of Urgency
- Risk Taking



702 13th Avenue East West Fargo, ND 58078 / TrueNorthSteel.com / 701-373-7781

